

For questions or additional information,  
please visit our website at:

[www.southchicagoheights.com](http://www.southchicagoheights.com)

## VILLAGE OF SOUTH CHICAGO HEIGHTS

### Stormwater Pollution

#### What is stormwater?

Stormwater is the rain or melted snow that runs down our roads and into the drains in the streets and then into lakes, river, or streams.

#### What is the problem?

Every time it rains, gallons and gallons of Stormwater runoff from our roads flow

**UNTREATED** into the nearest lake, pond, or river and our drinking water.

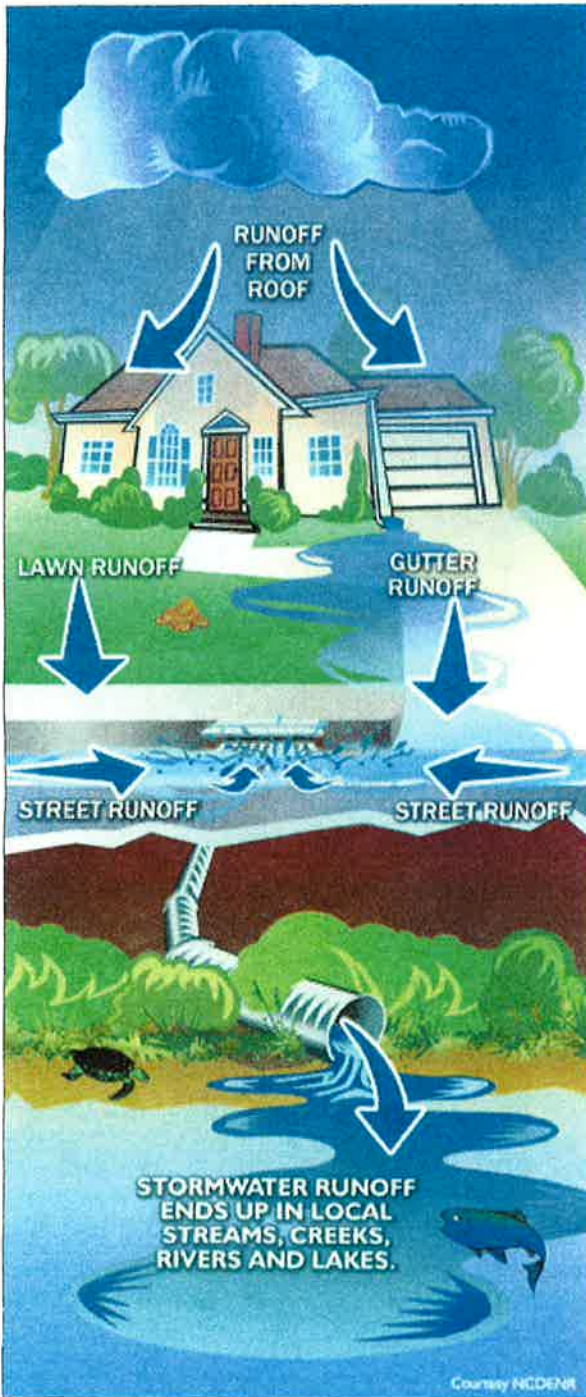
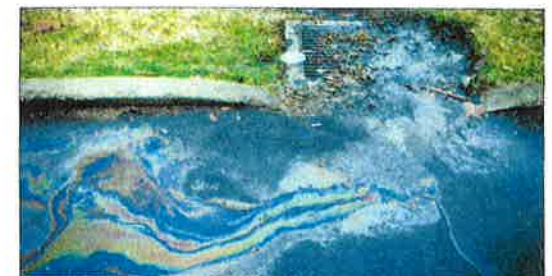
**VILLAGE OF SOUTH CHICAGO HEIGHTS**

**3317 CHICAGO ROAD**

**P.O. BOX 770**

**SOUTH CHICAGO HEIGHTS, IL 60412**

**(708) 755-1880**



## What Pollutes the Water

Motor oil, fertilizers, pesticides, dirt, yard clippings, pet waste, mud and other pollutants that end up on road surfaces from cars and adjacent lawns and construction sites are pollutants.



## Don't be a Part of the Problem...

Excess fertilizers pesticides, and herbicides used on lawns can wash off into roadways, into drains then untreated into bodies of water. Fertilizers can cause algae blooms, or increase pond weed growth!



Oil, paint, gas, metals, and detergents, from cars are toxins that are harmful to aquatic life and when in our water supply, are expensive to remove.

Pet waste is rich in nutrients, like fertilizers, but they also include fecal bacteria, which can contaminate our Creeks and ponds.



Village of South Chicago Heights

## Help Us Help Our Environment!

- \* Don't dump anything into the storm drain.
- \* Use fertilizers and pesticides sparingly.
- \* Keep grass clippings, trash, and dirt off the streets and out of the gutter
- \* Prevent automobile fluid leaks- oil, gas, etc.
- \* Wash your car on the lawn so water and soap get absorbed
- \* Use low phosphate detergents in small amounts
- \* Clean up pet waste; put in trash
- \* Spread the word about protecting our water